



Continued from page 3

Call before you dig

If you'll be performing work in your yard that involves digging, **Florida law requires you call 811 before you begin** to locate and mark buried power lines and other utilities. Call at least two business days before you begin to avoid unintentionally hitting underground utility lines. This free service helps keep everyone safe.

Hire qualified professionals to trim near power lines

Customers share in the responsibility of keeping power lines clear. If you have vegetation growing near power lines on your property, hire a qualified professional to perform the work. Do not take it upon yourself to perform any work near power lines.

Always keep yourself and the end of any object you are holding at least 10 feet from main and neighborhood power lines and 30 feet from higher voltage transmission lines. You can be seriously hurt or worse, should you or anything you are touching come into contact with a power line.



Transmission line

Main or neighborhood line

**Remember:
Your safety is the #1 priority**

For more information on trees and power lines, visit FPL.com/trees
1-800-226-3545

 Arbor Day Foundation



FPL108001



How keeping trees away from power lines improves your electric service

What homeowners and businesses need to know

FPL.com

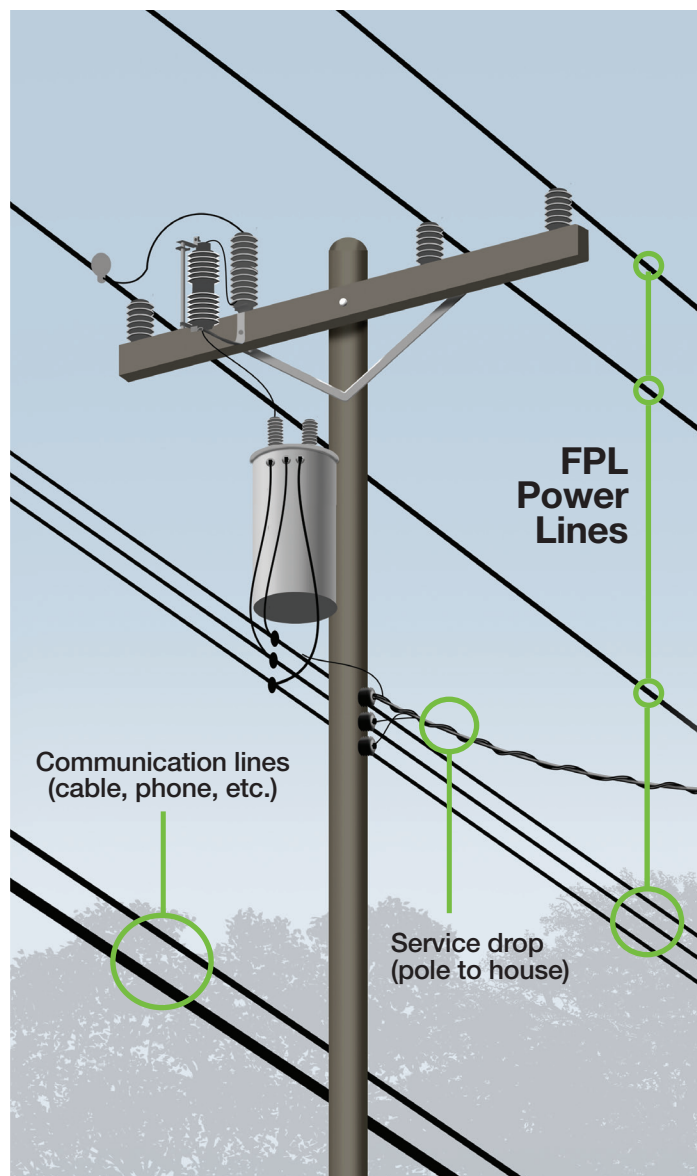
CHANGING THE CURRENT. 

Smart landscaping starts with a plan

Landscaping to shade your home from the sun is a low-cost, effective way to reduce your cooling costs. FPL is working hard to deliver worry-free energy, now and in the future, and we need your help. Use this landscape planning guide to help ensure reliable electric service for you and your neighbors.

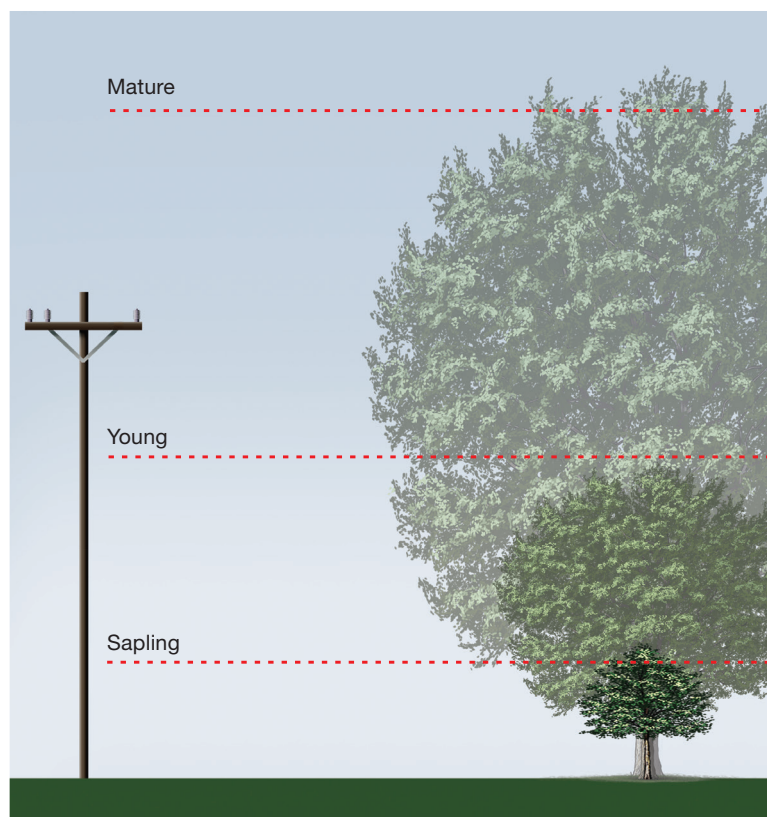
1 Note the location of power lines

Power lines are usually located at the top of the utility pole, farthest from the ground. Cable television and telephone lines run closer to the ground, below power lines. When planting your trees, be sure to give them ample room to grow without interfering with power lines.



2 Find the right tree, choose the right place

Before selecting a tree, consider how tall, wide and deep it will be at maturity. Then carefully consider the location and appropriate set-back distances to prevent avoidable power disturbances for years to come. **See Right Tree/Right Place guidelines on page 3.**



3 Keep transformers clear



Stay safe

When planting, what you can't see **can** hurt you, so before you reach for a shovel, reach for the phone. One easy call to 811 starts the process of getting underground utility lines marked. Make that call at least two full business days before you start digging; it's fast, free and required by law.

When doing yard work, always look up and note the location of power lines. **Never attempt to trim any vegetation growing near power lines. Only qualified professionals should perform this work.**

FPL is working hard to deliver worry-free energy, now and in the future, and we need your help.

Did you know that trees are among the most common causes of outages and flickers, especially during storms? And that during Hurricane Irma in 2017, trees were the number one cause of outages?

While FPL trims trees near power lines located in the public right of way or easement, most damage was due to large trees located outside of the utility pruning zone, falling into FPL equipment and our Right Tree/Right Place guidelines not being followed.

One of the most important things homeowners and businesses can do is follow FPL's Right Tree/Right Place guidelines.

A tree planted too close to a power line falls in September 2017 during Hurricane Irma in Sarasota. Trees and vegetation blowing over or knocking into power lines is one of the leading causes of power outages. Following FPL's Right Tree/Right Place guidelines for tree planting and maintenance can help reduce these occurrences.



1

Line clearing helps prevent outages

What FPL does

The purpose of FPL's line clearing program is to protect our equipment and maintain service reliability.

FPL is committed to delivering safe, reliable electric service to our nearly 5 million customers. The company operates more than 45,000 miles of overhead power lines.

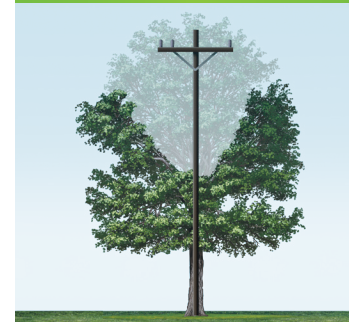
FPL trims vegetation growing near power lines on continual, planned trimming and clearing cycles. We clear main power lines every three years and neighborhood lines every six years, on average.

FPL directs its contractors to follow the International Society of Arboriculture and American National Standard Institute pruning guidelines. FPL uses directional pruning to protect the health of trees while helping them grow away from power lines. Directional pruning, which is considered industry best practice, removes entire branches and limbs down to the main trunk of the tree where trees normally shed. This method directs future tree growth away from the power lines and reduces re-growth.

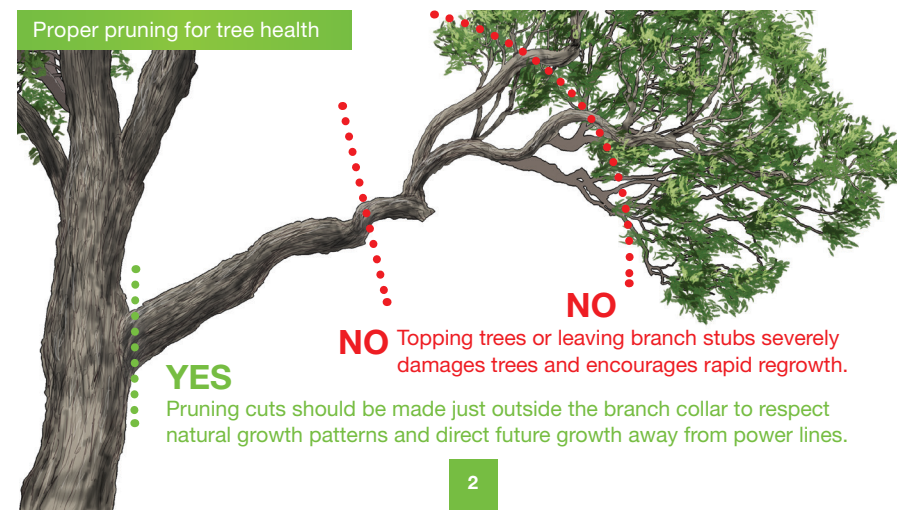
Side-trim directional pruning



V-trim directional pruning



Proper pruning for tree health



2

Remember: Always keep yourself and the end of any object you are holding at least 10 feet from main and neighborhood power lines and 30 feet from higher voltage transmission lines.

What customers can do

FPL customers play an important role in keeping power lines clear

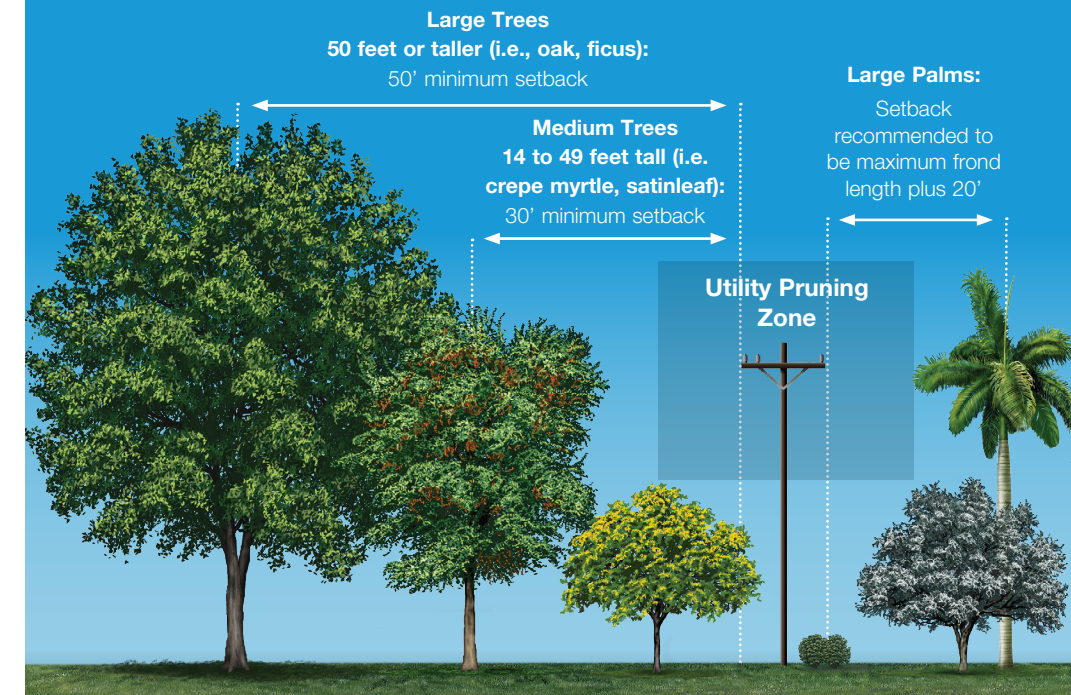
Plant the Right Tree in the Right Place

One of the most important things businesses and homeowners can do is follow FPL's Right Tree/Right Place guidelines.

If you're planting trees on your property, look up and note the location of power lines. Before you plant, keep in mind the setback dimensions in the diagram below. Think about how your tree will impact existing utility lines as it grows taller, wider and deeper. Keeping trees away from power lines means that, in the event they blow over or tree limbs become loose, they're much less likely to hit a power line and knock out power. This also keeps debris farther away from the lines to speed our restoration efforts.

Additionally, be sure to proactively perform yardwork on your property that isn't near power lines. Don't wait for a hurricane or other major event. No amount of trimming can substitute for smart landscaping and responsible maintenance of trees and other vegetation by property owners.

Note: Small trees less than 14 feet tall and shrubs may be planted adjacent to power lines. These set-back guidelines increase around transmission lines and equipment. Trees are shown at mature height.



3

Continued on page 4